

▶ **Entire 9th floor**

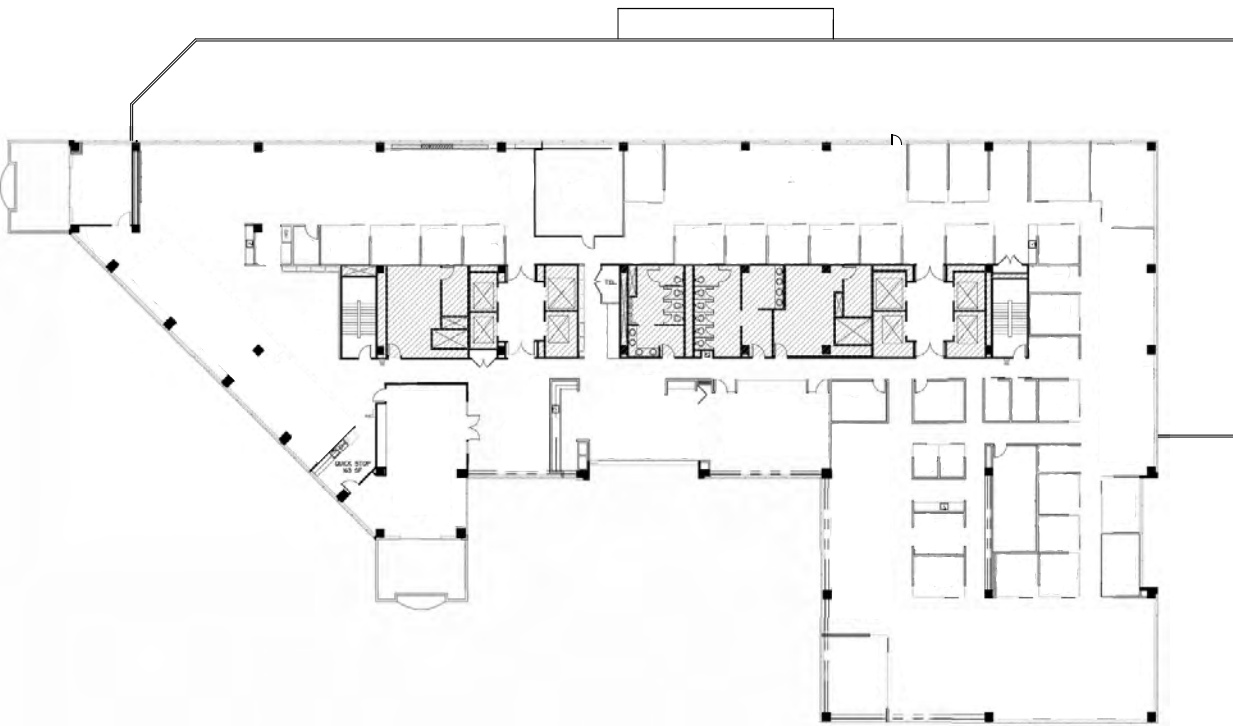
Highly improved former corporate HQ space consisting of 28,000RSF of premises plus an additional 8,485 SF on 3 separate exclusive use decks.

9TH
floor



SUITE 900
±28,000 RSF

CALIFORNIA PLAZA



PLEASE CONTACT THE LEASING BROKERS FOR MORE INFORMATION



CLICK HERE FOR VIRTUAL TOUR



BRECK LUTZ
925.974.0109
breck.lutz@nmrk.com
CA RE LICENSE #00936859



DANNY BARTZ
925.974.0231
danny.bartz@nmrk.com
CA RE LICENSE #01971819

NEWMARK **PCCP** **ALIGN**
REAL ESTATE