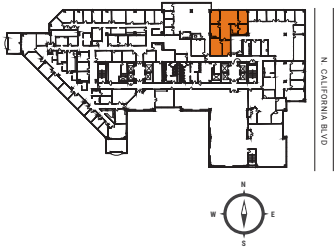
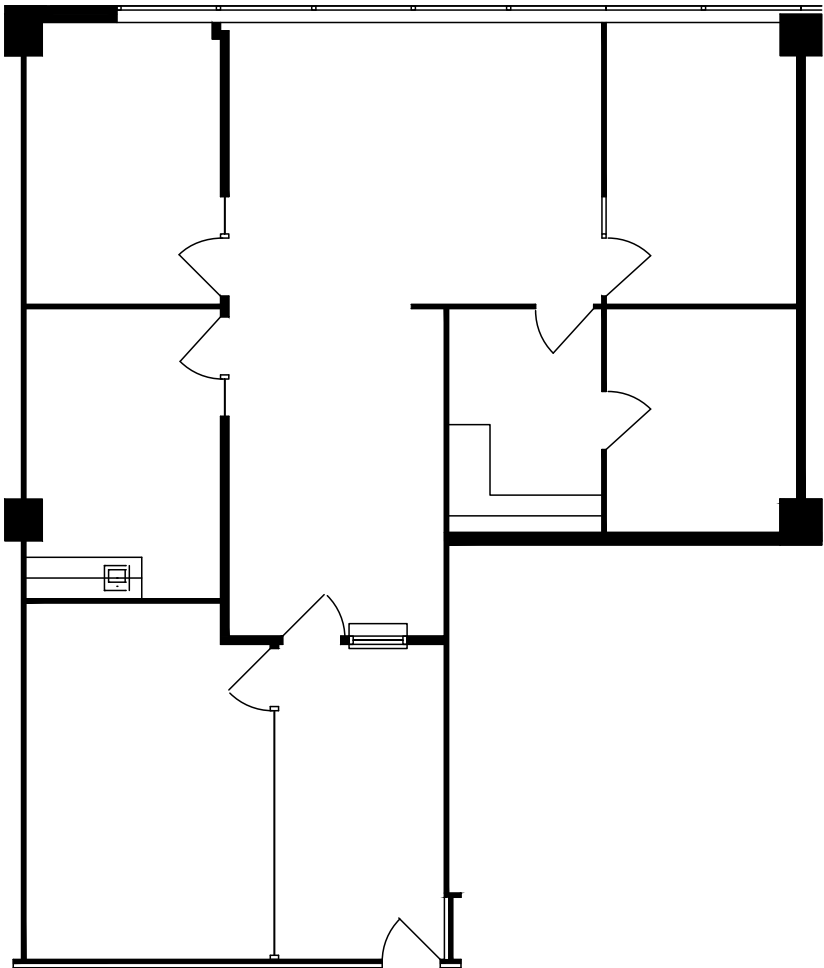




SUITE 845
±1,992 RSF

CALIFORNIA PLAZA



PLEASE CONTACT THE LEASING BROKERS FOR MORE INFORMATION

360° [CLICK HERE FOR VIRTUAL TOUR](#)

NEWMARK



BRECK LUTZ
925.324.6321
breck.lutz@nmrk.com
CA RE LICENSE #00936859

DANNY BARTZ
925.708.8188
danny.bartz@nmrk.com
CA RE LICENSE #01971819

The distributor of this communication is performing acts for which a real estate license is required. The information contained herein has been obtained from sources deemed reliable but has not been verified and no guarantee, warranty or representation, either express or implied, is made with respect to such information. Terms of sale or lease and availability are subject to change or withdrawal without notice. September 2023